

Wireless Reporting and Monitoring Stand-by Emergency LED Driver

21W

General Product Information:

- 5VA heavy duty plastic housing
- 120/277VAC universal input voltages
- External NiMH battery, environmentally safe
- UL Listed
- Easy wireless reporting and testing system - Auto testing available
- Minimum of 90 minutes when lost of AC power
- Suitable for damp location applications
- Programmable output with great flexibilities
- Meet CEC, Title 20 energy efficiency requirement



7.32x1.22x1.96 in.

iES-V021-NP

work with external battery pack

Input Specifications:

- Input Voltage: 120 - 277VAC
- Freq. Range: 50 - 60 Hz
- Input Power: 120VAC/100mA; 277VAC/50mA

Output Specifications:

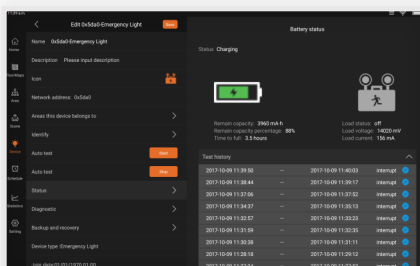
- Output Voltage: 12 - 48VDC
- Output Current: 1040mA - 520mA, Programmable
- Max. Wattage: 21 Watts

Environmental Specifications:

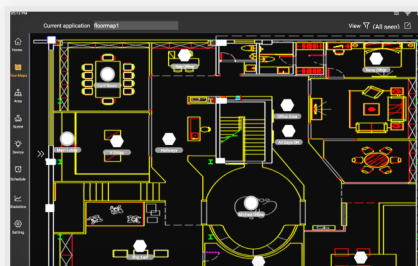
- Ambient Operating Temp.: 0° - 55° C
- Case Temp.: 75° C
- Product Safety Approval: UL Listed (pending)
- EMI Compliance: FCC part15, ClassA

Model No.	Emergency Power	Select SW	Output Vdc	Output A	Max. W
iES-V021L-NP _x	21.0W	1	12-18	1.04A	21
		2	16-26	0.70A	21
		3	24-38	0.60A	21
		4	36-48	0.52A	21

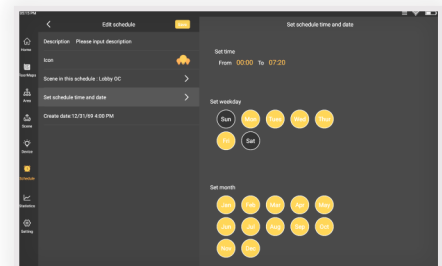
- A peace of mind
- Realtime battery health statuses
- Device map for easy accessing
- Programmable output reduce SKU
- Cost savings with group testing command



Realtime BatteryStatus



Interactive Mapping with full Control



Synergistic Schedule