

Wireless Reporting and Monitoring Stand-by Emergency LED Driver

10W

Anz253 2019R3

General Product Information:

- Durable heavy duty steel housing
- 120/277VAC universal input voltages
- Maintenance free NiMH battery, environmentally safe
- UL Listed
- Two state-of-the-art reporting and testing system
 - Wireless Network and Full Auto Self-Diagnostic
- Minimum of 90 minutes when lost of AC power
- Suitable for damp location applications
- Programmable output with great flexibilities
- Meet CEC. Title 20 enerav efficiency requirement



8.54x2.07x2.28 in.

iES-H007-HM

Input Specifications:

- Input Voltage: 120 - 277VAC
- Freq. Range: 50 - 60 Hz
- Input Power: Max. 85mA; 3.9W



14.29x1.17x 2.10 in.

iES-H007-LM

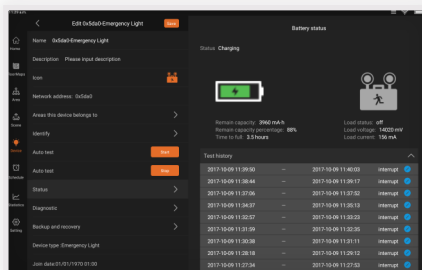
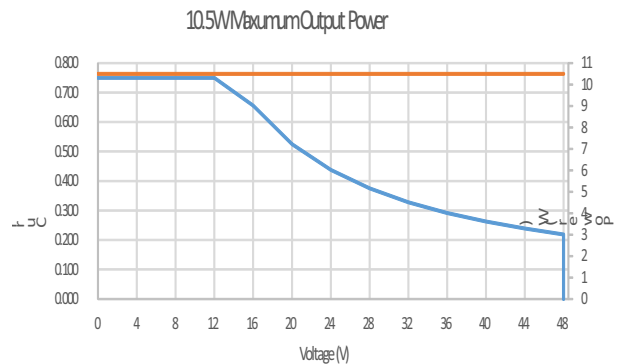
Output Specifications:

- Output Voltage: 12 - 48VDC
- Output Current:: 750mA - 210mA, Programmable
- Max. Wattage: 10 Watts

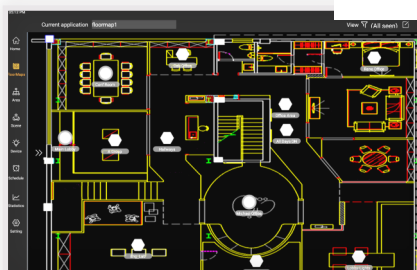
Environmental Specificatrions:

- Ambient Operating Temp.: 0° - 50° C
- Product Safety Approval: UL/cUL Listed
- EMI Compliance: FCC Part15, Class A

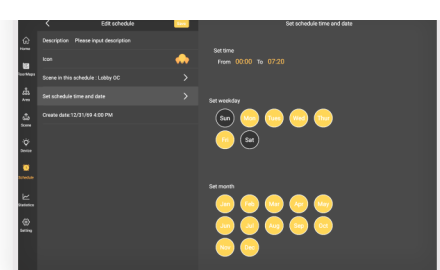
- A peace of mind
- Realtime battery health statuses
- Device map for easy accessing
- Programmable output reduce SKU
- Cost savings with group testing command



Realtime BatteryStatus



Interactive Mapping with full Control



Synergistic Schedule

Model No.	Emergency Power	Output Range Vdc	Factory Default Output mA	Max. Output W	SW1	SW2	Sw3	SW4
iES-H010L-HMx	10.0W	16.0	625	10	On	Off	Off	Off
		24.0	425	10	Off	On	Off	Off
iES-H010L-LMx	10.0W	36.0	280	10	Off	Off	On	Off
		48.0	210	10	Off	Off	Off	On

Chart below are factory standard outputs

